



BSB60720 Advanced Diploma of Program Management

The information in this document will help you understand the Scouting pathways to achieve the Advanced Diploma of Program Management from the Scouts Australia Institute of Training (RTO 5443).

The information will assist:

- Adults in Scouting who support the program in a broad range of roles and responsibilities

BSB60720 Advanced Diploma of Program Management

This qualification reflects the role of individuals who apply specialised knowledge and skills, together with experience in program management across a range of enterprise and industry contexts. Individuals in the role of Program Manager are responsible for managing or directing a program to achieve organisational objectives. A program is defined as a set of interrelated projects, each of which has a project manager.

Individuals at this level use initiative and judgement to direct, plan, and lead a range of program functions, with accountability for personal and team outcomes within broad parameters. They use cognitive and communication skills to identify, analyse and synthesise information from a variety of sources and transfer their knowledge to others, and creative or conceptual skills to express ideas and perspectives or respond to complex problems.

Learning Pathways

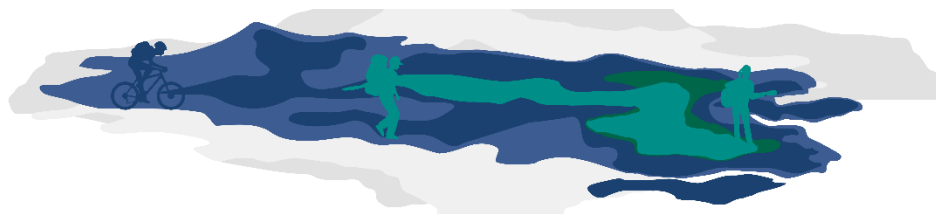
The learning associated with this qualification is beyond the Scouts Australia training for adult members, however the progression through adult training enables a scaffolded approach to gaining knowledge and skills over several years combined with application and further learning relevant to defined roles within the volunteer and paid leadership roles within Scouts Australia.

Participants are Adult members, in particular Commissioners and paid staff:

- Adults in Region, State or National roles, supporting Scouting in Australia.

Scouting pathway:

- Have at least eighteen (18) months Scouting experience.
- Complete Wood Badge training program, Scouting Leadership receiving;
 - Wood Badge (wood beads) and Parchment
 - International membership of 1st Gilwell Park Scout Group evidenced by the issuing of the Gilwell Scarf
- Have completed:
 - Diploma of Project Management or higher qualification, or
 - Have completed two years equivalent full-time relevant workplace experience at a significant level within a project or program environment within an enterprise.



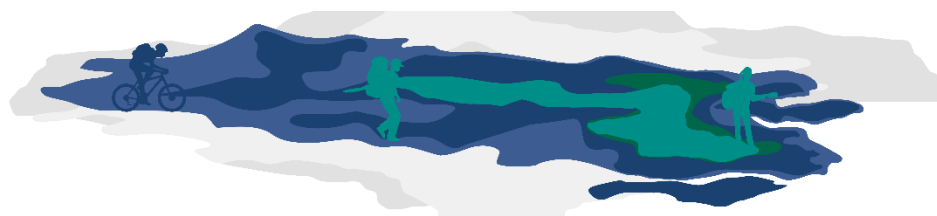
Qualification packaging

The Advanced Diploma of Program Management requires the completion of twelve (12) units of competency:

- 4 core units plus
- 8 elective units, of which:
 - 6 elective units must be selected from the listed elective units
 - for the remaining 2 elective units they may be selected from the listed electives or from an Advanced Diploma or above from any currently endorsed Training Package qualification or accredited course.
 - If not listed, 1 unit may be selected from a Diploma from any currently endorsed Training Package qualification or accredited course.

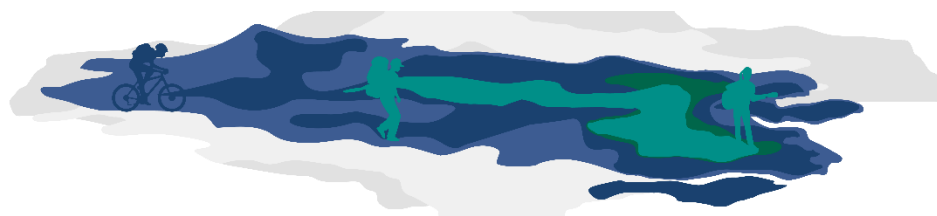


<p>Core units</p> <ul style="list-style-type: none"> • All participants are required to complete the core units of competency 	<p>BSBPMG630 Enable program execution BSBPMG634 Facilitate stakeholder engagement BSBPMG635 Implement program governance BSBPMG636 Manage benefits</p>
<p>Listed Electives</p> <ul style="list-style-type: none"> • Learning associated with this unit is in The Scouts Australia, Training Advanced Course and this is a listed elective in the: <ul style="list-style-type: none"> ○ Diploma of Leadership and Management ○ Diploma of Outdoor Leadership 	<p>BSBPEF502 Develop and use emotional intelligence</p>
<p>Listed Electives</p> <ul style="list-style-type: none"> • These units are all listed electives in this qualification and can be used to make up the required six (6) listed electives. • These units are also listed units in the Advanced Diploma of Leadership and Management and can be used in both qualifications 	<p>BSBCRT611 Apply critical thinking for complex problem solving BSBLDR601 Lead and manage organisational change BSBSTR601 Manage innovation and continuous improvement BSBPMG633 Provide leadership for the program BSBPMG637 Engage in collaborative alliances BSBSUS601 Lead corporate social responsibility</p>
<p>Recommended units</p> <ul style="list-style-type: none"> • Two (2) units not listed in this qualification that could be used as electives are also core units in the Advanced Diploma of Leadership and Management 	<p>BSBLDR602 Provide leadership across the organisation BSBOPS601 Develop and implement business plans</p>
<p>Further alternate elective units of competency are available. For further information or advice speak to your Branch Commissioner for Vocational Education and Training (VET) or visit https://training.gov.au/Training/Details/BSB60720</p>	



Dual Qualification

BSB60420 Advanced Diploma of Leadership and Management	BSB60720 Advanced Diploma of Program Management
<p>If suitable for the candidates needs the below options will enable maximum Credit Transfer, completing less units of competency to achieve multiple qualifications.</p> <ul style="list-style-type: none"> • Units highlighted in green are listed units in both Advanced Diplomas • Units highlighted in yellow are Core units of competency required to complete that qualification, yet they are not listed electives in the other Advanced Diploma but they can be used within the qualification packaging rules. 	
<p>Packaging Rules Total number of units = 10</p> <ul style="list-style-type: none"> • 5 core units plus • 5 elective units, of which: <ul style="list-style-type: none"> ○ 3 elective units must be selected from the listed electives ○ for the remaining 2 elective units: <ul style="list-style-type: none"> ▪ up to 2 units may be selected from the listed electives or from an Advanced Diploma or above 	<p>Packaging Rules Total number of units = 12</p> <ul style="list-style-type: none"> • 4 core units plus • 8 elective units, of which: <ul style="list-style-type: none"> ○ 6 elective units must be selected from the listed electives ○ for the remaining 2 elective units: <ul style="list-style-type: none"> ▪ up to 2 units may be selected from the listed electives or from an Advanced Diploma or above ▪ if not listed, 1 unit may be selected from a Diploma from this or any other qualification or accredited course.
BSBCRT611 Apply critical thinking for complex problem solving	BSBCRT611 Apply critical thinking for complex problem solving
BSBLDR601 Lead and manage organisational change	BSBLDR601 Lead and manage organisational change
BSBLDR602 Provide leadership across the organisation	BSBLDR602 Provide leadership across the organisation
BSBOPS601 Develop and implement business plans	BSBOPS601 Develop and implement business plans
BSBSTR601 Manage innovation and continuous improvement	BSBSTR601 Manage innovation and continuous improvement
	BSBPMG630 Enable program execution
BSBPMG634 Facilitate stakeholder engagement	BSBPMG634 Facilitate stakeholder engagement
	BSBPMG635 Implement program governance
BSBPMG636 Manage benefits	BSBPMG636 Manage benefits
BSBPMG633 Provide leadership for the program	BSBPMG633 Provide leadership for the program
BSBPMG637 Engage in collaborative alliances	BSBPMG637 Engage in collaborative alliances
BSBSUS601 Lead corporate social responsibility	BSBSUS601 Lead corporate social responsibility



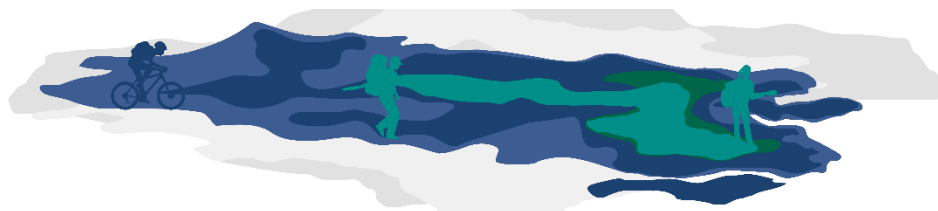
Assessment

Your Assessor will need to be able to view your portfolio of evidence either physically or preferably a digital copy.

- Copies of work you have completed which aligns to the requirements of the selected units of competency.
- A copy of your Diploma of Project Management
- A copy of your Resume or Curriculum Vitae
- Letters of recommendation or reference
- Copies of existing qualifications
- RPL Assessment Tool Kit. If required, this will be provided by your Branch Commissioner for Vocational Education and Training (BC VET) or your Assessor.

For Advanced Diploma qualifications the Scouts Australia RTO has determined that to ensure consistency and high quality all candidates will have a moderating assessor. What this means for you is;

- A primary assessor will work with you and assess the evidence you have provided,
- A second assessor will also assess the same evidence,
- After both assessors are satisfied that you meet the criteria for each unit of competency you will then be issued with your qualification.



Where to from here?

Be Prepared...
for new adventure!

By continuing to apply your learning and participating in what Scouting has to offer both youth and adult members you are able to work towards other Qualifications:

- Evidence from this qualification and ongoing involvement in leadership roles for Scouting and elsewhere may provide you with evidence towards:
 - BSB60420 Advanced Diploma of Leadership and Management
- Advanced Diploma qualifications can provide excellent advanced standing and credits towards higher level qualifications including Bachelor Degrees and Graduate qualifications.

Australian Qualifications Framework		
Secondary School	Vocational Education and Training (RTOs)	Higher Education (Universities)
		Doctoral Degrees (Phd)
		Masters Degrees
	Graduate Diploma	Graduate Diploma
	Graduate Certificate	Graduate Certificate
		Bachelor Degree
	Advanced Diploma	Advanced Diploma / Associate Degree
	Diploma	Diploma
	Certificate IV	
	Certificate III	
Senior Secondary Certificates of Education	Certificate II	
	Certificate I	

The following webpage provides information for members to find out more about the Qualifications that are available, at no additional cost, from the Scouts Australia Institute of Training.

- <http://sait.scouts.com.au>



Scouts
 SCOUTS AUSTRALIA
 INSTITUTE OF TRAINING

